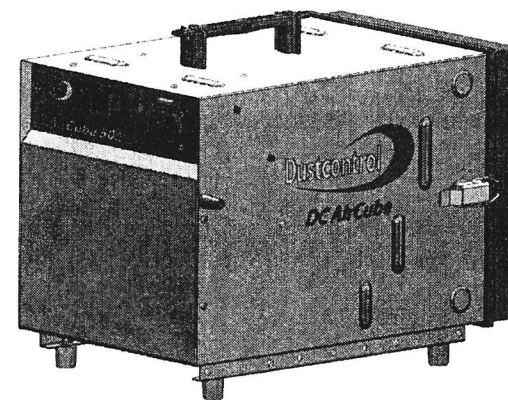


DC AirCube 500

Part No 94156

Bruksanvisning i original
Original instructions
Originalbetriebsanleitung
Notice originale
Oorspronkelijke gebruiksaanwijzingg



Safety Considerations

Read all instructions before attempting to operate this machine and save these instructions.

Warning! When using electric machines, basic safety precautions should always be followed to reduce the risk of fire, electric shock and personal injury, including the following:

1. Work area environment

Don't expose the machine for rain. Don't use it in damp or wet locations or in presence of flammable liquids or gases.

2. Overload

Never let the machine operate fully throttled. Always follow the regulations pertinent to the material you are working with. Don't use the machine for purposes that it isn't intended for.

3. Don't abuse cord

Never pull the machine by cord. Keep cord from heat and sharp edges. Check the electric cable regularly if damage. The cord should not be wrapped around the handle during operation.

4. Important measure

With cleaning and maintenance on the machine, the power cable should be disconnected from the supply.

5. Maintain the machine with care

Keep machine clean and check that the hose (extra accessories) is entire and that all gaskets are tight. Follow instructions. Keep handles dry and free from oil and grease.

6. Checking of damage

Before further use of the machine it should be carefully checked that the machine is undamaged. If there are any damaged parts these should be repaired by a Dustcontrol authorized service center.

7. Warning

Use only accessories and replaceable parts which are available in Dustcontrol catalogue. When using faulty parts or pirate parts (especially filter) the machine could leak out unhealthy dust which can cause personal injuries.

TECHNICAL DATA

HxWxL	380 x 340 x 495 mm
Weight	13 kg
Outlet	φ 125 mm
Hose length (extra accessories)	5-10 m (φ 125)
Flow, at open outlet	500 m ³ /h
Neg pressure	max 400 Pa
Power consumption 115 V/240 V	240 V, 210 W, 115 V 195 W
Degree of separation, EN 1822-1	HEPA 13
Soundlevel*/:	
Speed 1	45 dB(A)
Speed 2	65 dB(A)

*/ Sound level at 1,6 m height and 1 m distance according to DIN EN ISO 3744 in free space and at maximum airflow.

Description

The DC AirCube 500 aircleaner is intended for cleaning the air in a work area and is intended for use as a compliment to spot extraction. Air is passed through a combination filter and a microfilter. The HEPA filter actually separates particles to 99.95%. The combination filter separates the majority of the particles and thereby prolonging the life of the microfilter.

When a loss of suction capacity is experienced the pre-filter should be changed. If the suction capacity does not increase after the pre-filter change then the Hepa filter should also be changed.

The fan has two speed settings which allow for economical running, for example during the night.

The DC AirCube 500 can also be used to discharge air from work places which must be kept under negative pressure. A 125 mm hose can be attached to the fan outlet where necessary.

Operation

Connect the machine to a suitable power source according to the specification of the machine. When using an extension cable with the machine, ensure that the connection is water tight and the extension cable is suitably rated.

The DC AirCube 500 aircleaner has two speed settings which allows for economical running, for example during the night.

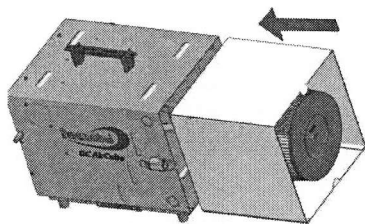
Service

While performing cleaning or maintenance on the machine, the unit should be off and disconnected from the power supply.

When the suction is reduced, due to the filters becoming clogged, the pre-filter should be changed. Turn the "soft" surface out and the "hard" surface towards the HEPA-filter.

If the suction still is weak, the HEPA filter should be changed too. With heavy dust loads the life of the filters are shorter. Use only original spare part filter 4080. Use suitable breathing protection and do the operation in a closed room. The used filter should be sealed in a plastic bag and disposed of according to approved methods.

Montage:



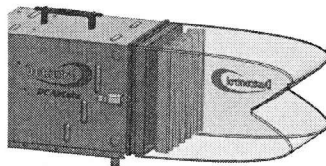
Check regularly that the electrical cable is not damaged in any way. With replacement of the cable and contact, use only water proof replacements.

The DC AirCube 500 should be performance tested and checked at least once per year or more frequently if subject to intensive use.

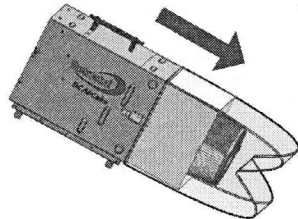
Because this machine is used with dangerous substances maintenance is vital, worn parts should be replaced. Never compromise the function of the DC AirCube 500, use only original spare parts. The fan is maintenance free.

- When light is on, it's time for service!

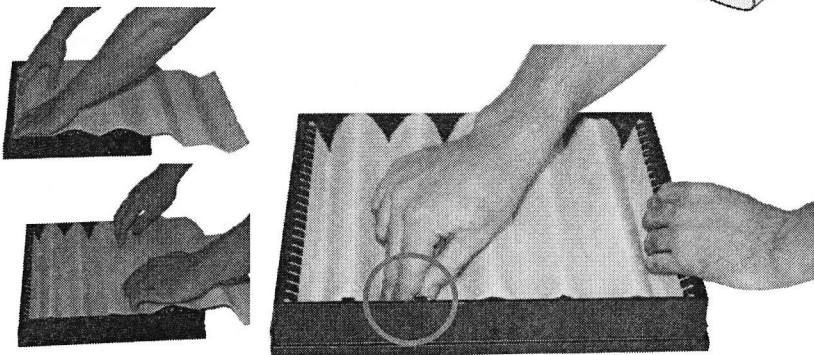
Change of prefilter:



Change of HEPA filter:

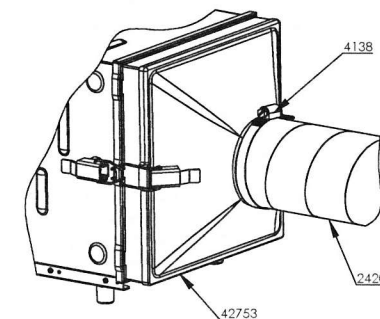


Montage of prefilter:



Accessories

Description	Part no
Hose ϕ 125 mm	2420
Hose clamp	4138
Prefilter	42690
Microfilter	42692
Funnel	42753



Other accessories — see Dustcontrol catalogue.

Warranty

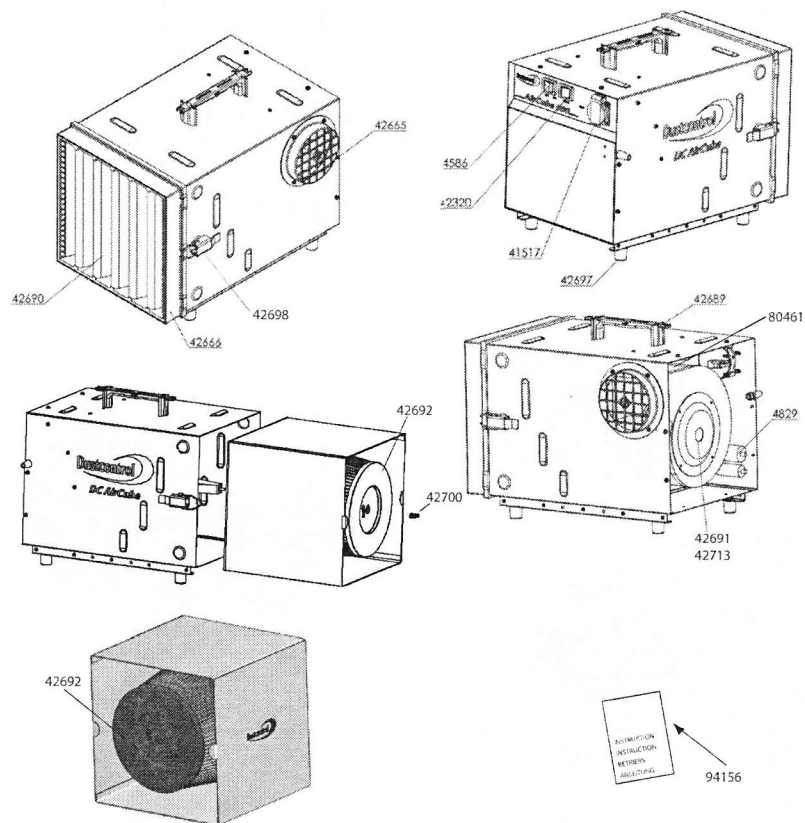
The warranty period for this machine is two years and covers manufacturers faults. The warranty is valid under the condition that the machine is used under normal conditions on the task for which it was designed and is maintained properly. Normal wear is not covered by this warranty.

Service performed by other than Dustcontrol or its authorized agent voids automatically the warranty. No other warranty express or implied is applicable.

TROUBLE SHOOTING

Problem	Fault	Solution
Machine blows dust.	Damaged filter or gasket.	Change filter.
Machine runs only on one speed.	Condenser is faulty.	Order parts and replace.
Reduction in airflow at exhaust.	Filled filter.	Change filter.
Fan does not start.	No power.	Check power source and connection.

DC AirCube 500



Art nr	Benämning
41517	Uttag
42320	Strömbrytare med grön lampa
42665	Utblåsningsstos
42666	Insugsgaller
42689	Handtag
42690	Förfilter
42691	Fläkt 240 V
42692	Mikrofilter

Art nr	Benämning
42697	Fot PVC
42698	Spännlås
42700	Vingmutter M6, plast, svart
42713	Fläkt 115 V
4586	Strömomkopplare
4829	Kondensator 400 V 4 µF
80461	Mikroswitch
94156	Bruksanvisning i original DC AirCube 500

Svenska

DC AirCube 500

Part No	Description
41517	Socket
42320	Switch, on/off
42665	Exhaust flange
42666	Protection grill
42689	Handle
42690	Prefilter
42691	Fan 240 V
42692	HEPA filter

Art. Nr.	Benennung
41517	Steckdose
42320	Schalter
42665	Ausblasflansche
42666	Ansauggitter
42689	Handgriff
42690	Vorfilter
42691	Gebläse 240 V
42692	Mikrofilter

Part n°	Description
41517	Retrait
42320	Interrupteur M/A
42665	Collerette de sortie
42666	Grille de protection
42689	Barre poignée
42690	Filter d'entrée
42691	Ventilateur 240 V
42692	Microfiltre HEPA

Artikelnummer	Omschrijving
41517	Stopcontact
42320	Aan/uit schakelaar
42665	Uitlaat verloop
42666	Beschermerooster
42689	Handvat
42690	Voor filter
42691	Ventilator 240 V
42692	HEPA filter

Part No	Description
42697	Foot for housing
42698	Fastener
42700	Wing nut M6, plastic, black
42713	Fan 115 V
4586	Switch, speed
4829	Condenser 400 V 4 µF
80461	Micro Switch
94156	Original instructions DC AirCube 500

Art. Nr.	Benennung
42697	Gummifuß
42698	Spannschloss
42700	Flügelmutter M6, plast, schwarz
42713	Gebälse 115 V
4586	Stufenschalter
4829	Kondensator 400 V 4 µF
80461	Micro Switch
94156	Originalbetriebsanleitung DC AirCube 500

Part n°	Description
42697	Pieds pour capot
42698	Verrou de tension
42700	Papillon M6, plastique, noir
42713	Ventilateur 115 V
4586	Connecteur
4829	Condensateur 400 V 4 µF
80461	Micro-interrupteur
94156	Notice originale DC AirCube 500

Artikelnummer	Omschrijving
42697	Rubber voet voor behuizing
42698	Fastener
4586	2 standen schakelaar
42700	Vleugelmoer M6, plastic, zwart
42713	Ventilator 115 V
4829	Condensator 400 V 4 µF
80461	Micro Switch
94156	Oorspronkelijke gebruiksaanwijzing DC AirCube 500

English

Deutsch

Français

Nederlands

